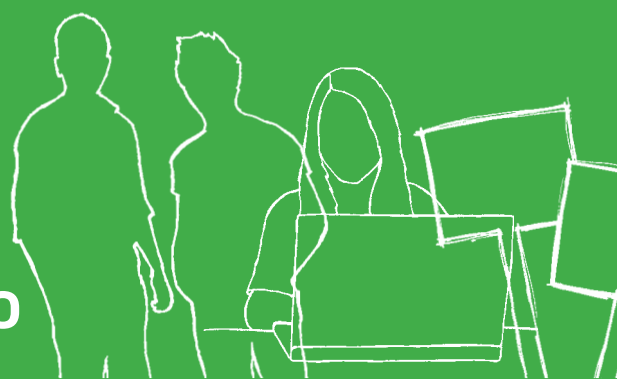


Our Members are at the Centre of Everything We Do



Mandate is the third largest trade union in the Republic of Ireland with a growing and increasingly active membership base across the Irish retail and bar trade.

You and Your Local Union

Activists and local committees will normally be elected to maintain and deliver Mandate's services in your local store, office or licensed premises as appropriate.

The size of the committee will vary; however, it should be representative of all the interests of the members it serves.

Local activists are the backbone of our union and will be given every opportunity to avail of the excellent training opportunities offered by Mandate. It is important to remember that you elect your local activists at a General Meeting.

Well trained activists are there to provide advice and representation and they will be in direct contact with you and your colleagues much more than an Official of Mandate.

Remember – You are Mandate Trade Union.



Structure of Mandate



Local and Regional Councils

The membership of the union is divided into Divisions, Local Councils and Regional Councils to one of which every member belongs. Local and Regional Councils are based on geographical areas. Both council structures will meet on a regular basis as provided for in the rule book.

OFFICERS OF LOCAL AND REGIONAL COUNCILS:

Local and Regional Council Chairpersons

Will preside at respective Council meetings and ensure that union rules are followed.

Local and Regional Council Vice-Chairpersons

Will assist/deputise for the Chairperson.

Local and Regional Council Secretaries

Will convene meetings, arrange minutes to be taken, deal with relevant correspondence and is usually the point of contact with/for Mandate Head Office.

Local Councils

You as a member can play a vital part in your union. You can ensure your voice is heard by attending your local Council meetings and actively participate in the Mandate Organising, Campaigning and Recruitment agenda both in your area and nationally. A well run local Council will hold regular meetings, ensure active participation at the Biennial Delegate Conference (BDC), take direct responsibility of the recruitment of workers into membership and the relevant activists will be well known as the face of Mandate throughout their general locality. In short, the Local Council will be effective because of the activity, enthusiasm and leadership of its officers and Council members.

Regional Councils

The Regional Council is composed of activists nominated by their Local Council to serve as a Regional representative. The general business of the Regional Council is as outlined in the rule book. The Regional Council will complement and build on the activity and work carried out at Local Council level.

Divisions

Local and Regional Councils shall be grouped into Divisions which are the organisation's electoral units for the National Executive Council (NEC). Divisions are formed, dissolved, amalgamated or sub-divided by Mandate's National Executive Council.

National Executive Council (NEC)

The NEC carries out the general administration of the union's business and governs the union between meetings of the BDC. Each Division is allocated a number of ordinary seats of the NEC in accordance with the rule book.

Biennial Delegate Conference (BDC)

The BDC is the supreme governing policy making body of the union which meets on a biennial basis. The BDC is composed of delegates from the various local councils of the union.



Mandate Head Office

O'Lehane House
9 Cavendish Row
Dublin 1

T: 01 874 6321

F: 01 872 9581

web: www.mandate.ie

email: mandate@mandate.ie